
- 1. Project Setting 2**
- 1.1 Media Creation Settings 2
- 2. User Settings 3**
- 2.1 Bin 3
- 2.2 Composer 4
- 2.3 Effect Editor 5
- 2.4 Export 5
- 2.5 Import 8
- 2.6 Interface 9
- 2.7 Link 11
- 2.8 Timeline 12
- 2.9 Transfer 12
- 3. User Profiles13**
- 3.1 Exporting a User Profile 13
- 3.2 Importing a User Profile 14

For more information on Project and User Settings, plus exporting and import User Profiles please see Chapter 33, titled “Settings,” in the Media Composer 2019 Editing Guide.

Click [here](#) for the Media Composer 2019 Editing Guide

1. Project Setting

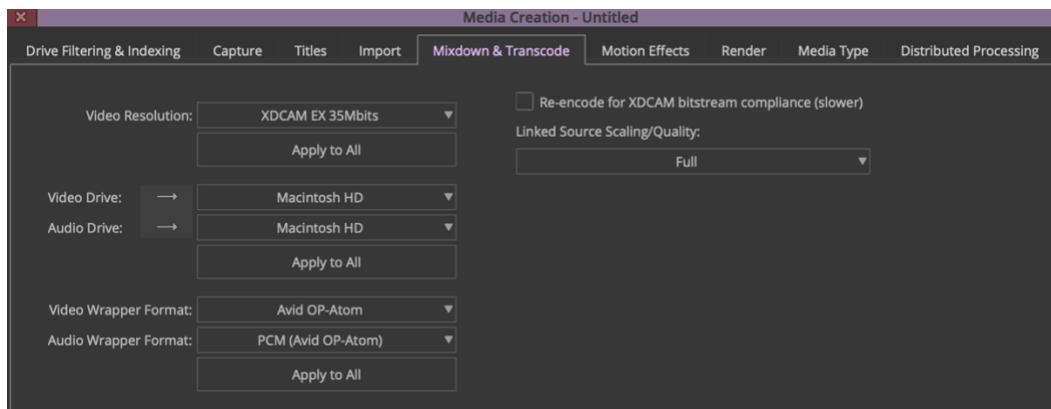
1.1 Media Creation Settings



Video and Audio Drive menus

- When working at the station select the proper **NEXIS** workspace
- When working remotely select the **Avid Media Drive**

Uncheck the **Re-encode for XDCAM bitstream compliance (slower)** option



2. User Settings

The following settings are saved with the User Profile found at C:\Users\Public\Public Documents\Avid Media Composer\Avid Users*<User Profile Name>*

2.1 Bin

Bin Settings - Current

Auto-Save interval: minutes

Inactivity period: seconds

Force Auto-Save at: minutes

Maximum files in a project's attic:

Max versions of a file in the attic:

Double-click loads object in:

Favorite Bins show at:

If no column is selected in Bin, typing in Quick Filter Text Box will:

Set Default Bin View:

Double clicking a closed Bin:

Tabs the Bin into the active pane in a Bin Container

Floats the bin

Ctrl (Cmd) + double click inverts the active setting

Enable edit from bin (Splice, Overwrite)

Always keep at least one version in Attic

Show local media icons

Skip prompts to save locked bins on Auto-Save

Frame View

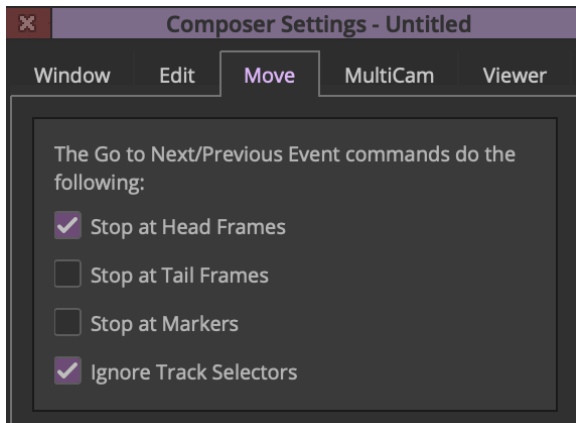
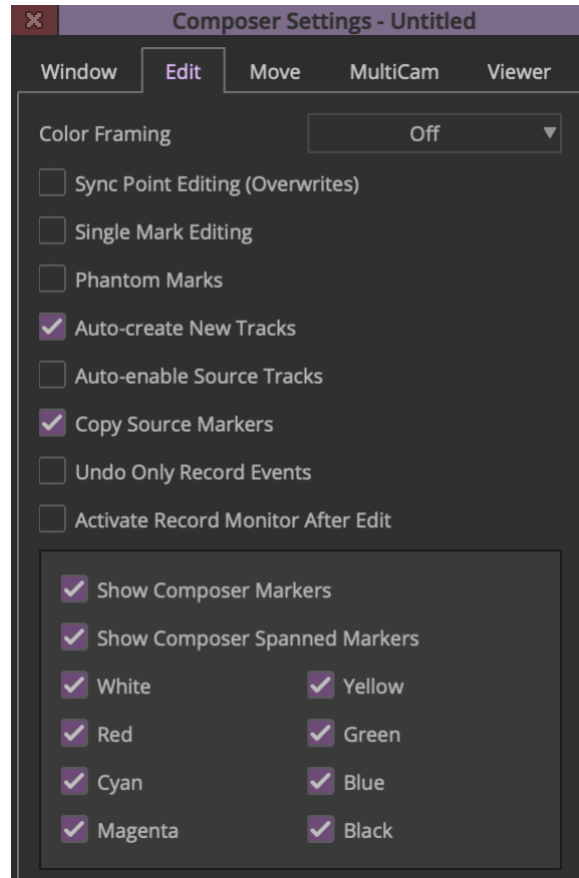
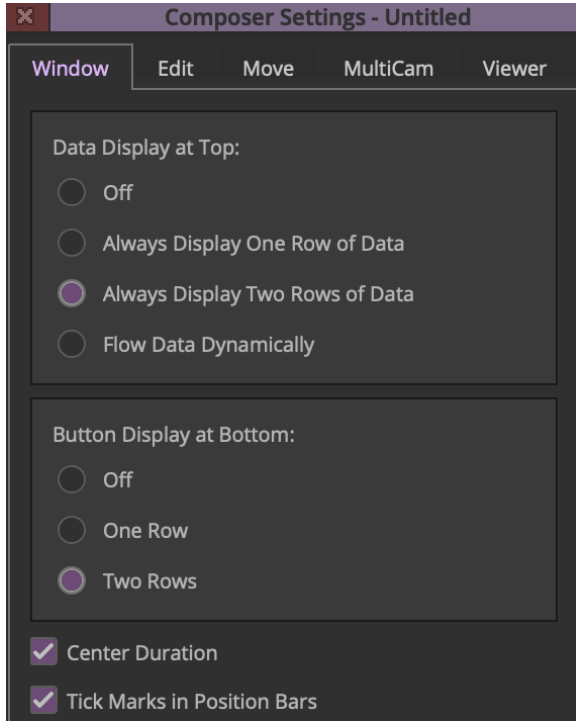
Show Border Colors

Use color based on object type

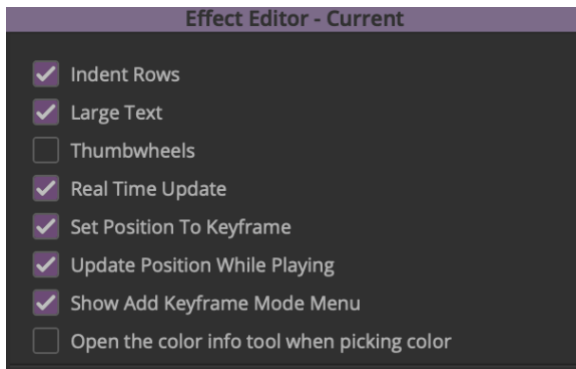
Use clip color

Show icons

2.2 Composer

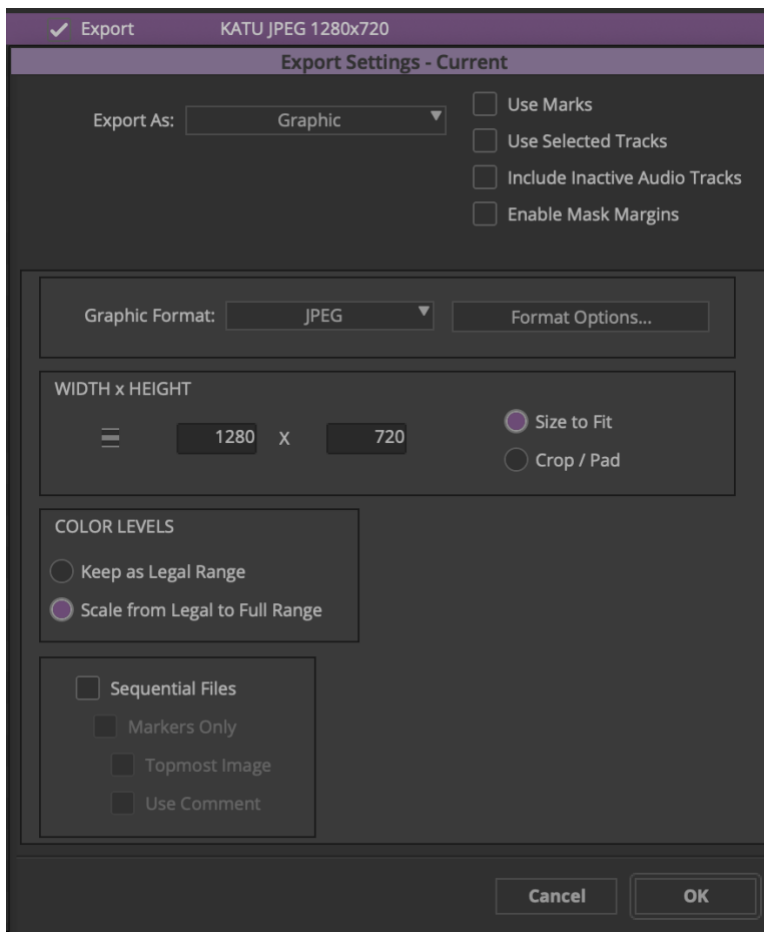


2.3 Effect Editor

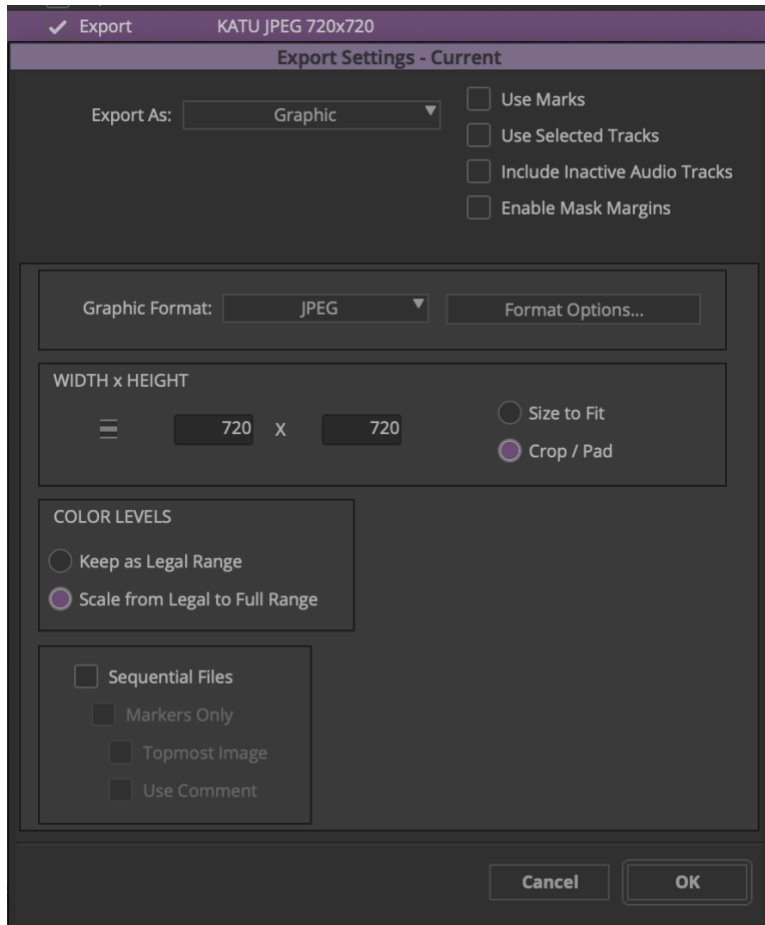


2.4 Export

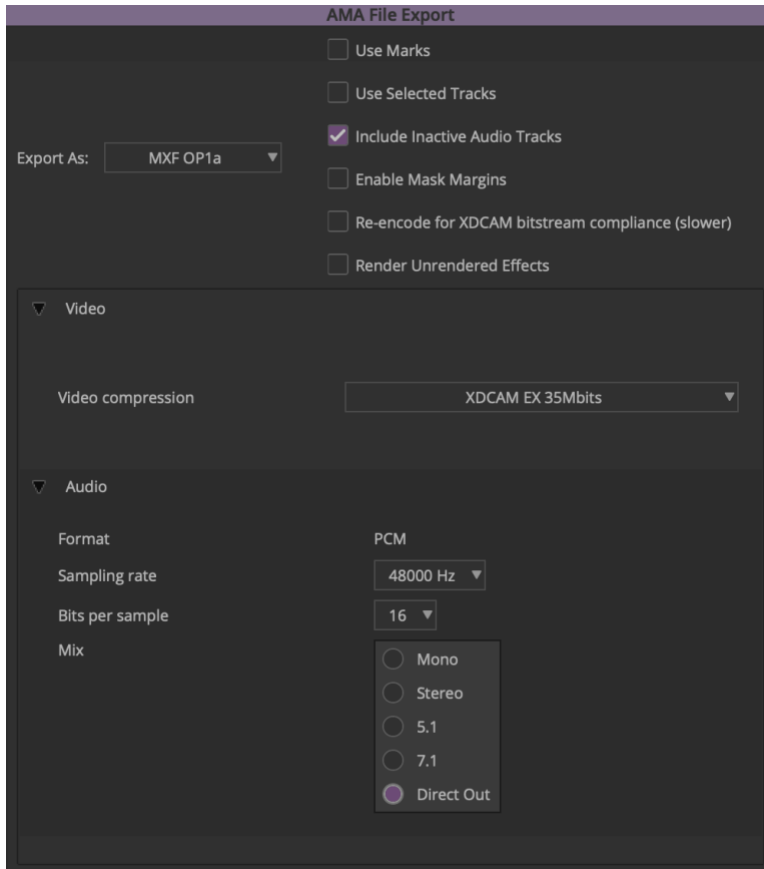
KATU JPEG 1280x720



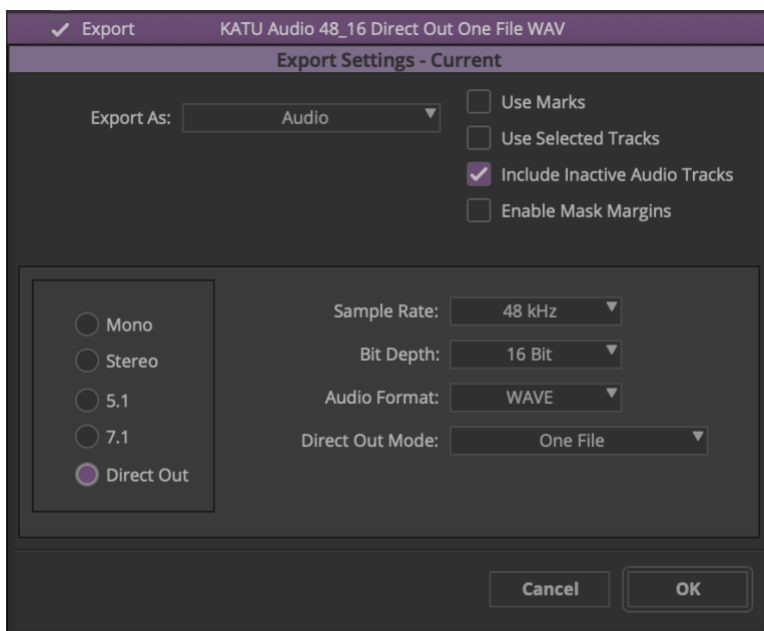
KATU JPEG 720X720



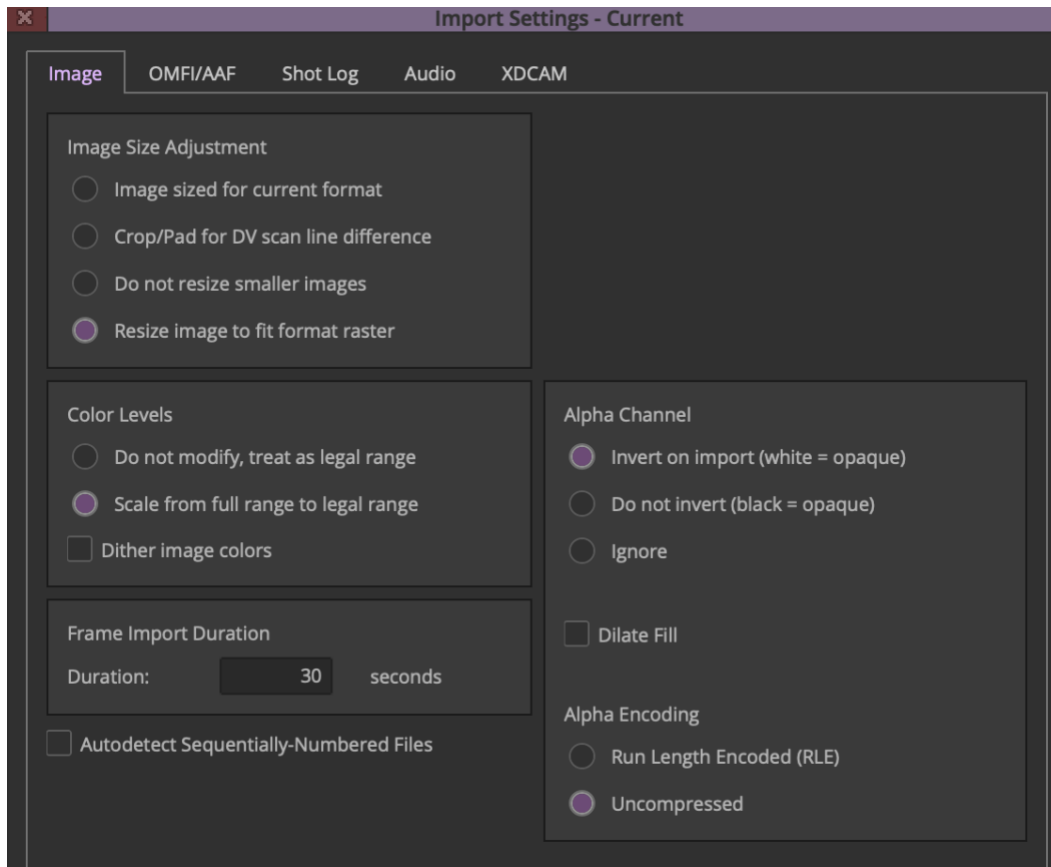
KATU XDCAM EX 35 MXF Direct Out



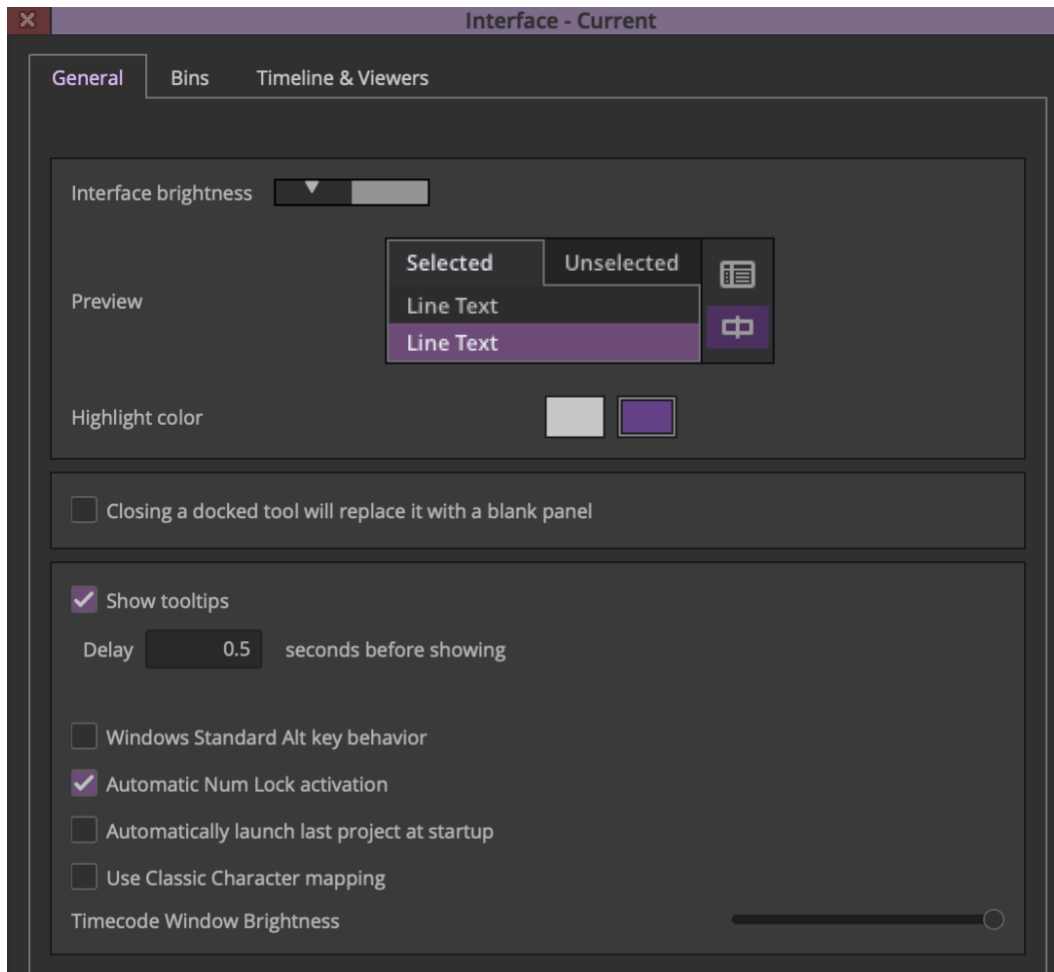
KATU Audio 48_16 Direct Out One File WAV

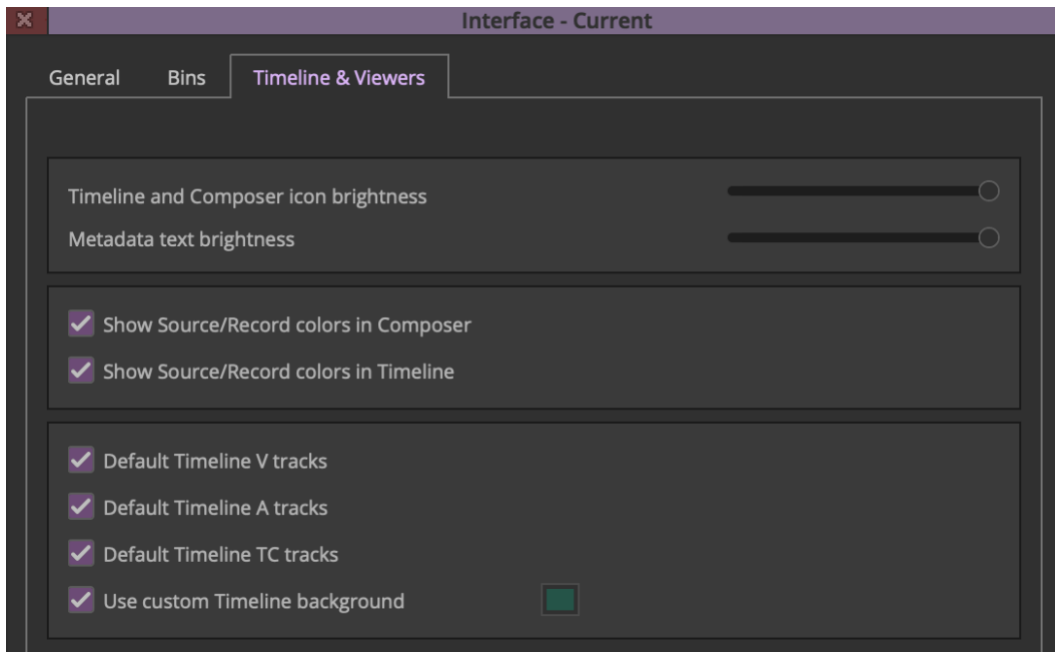
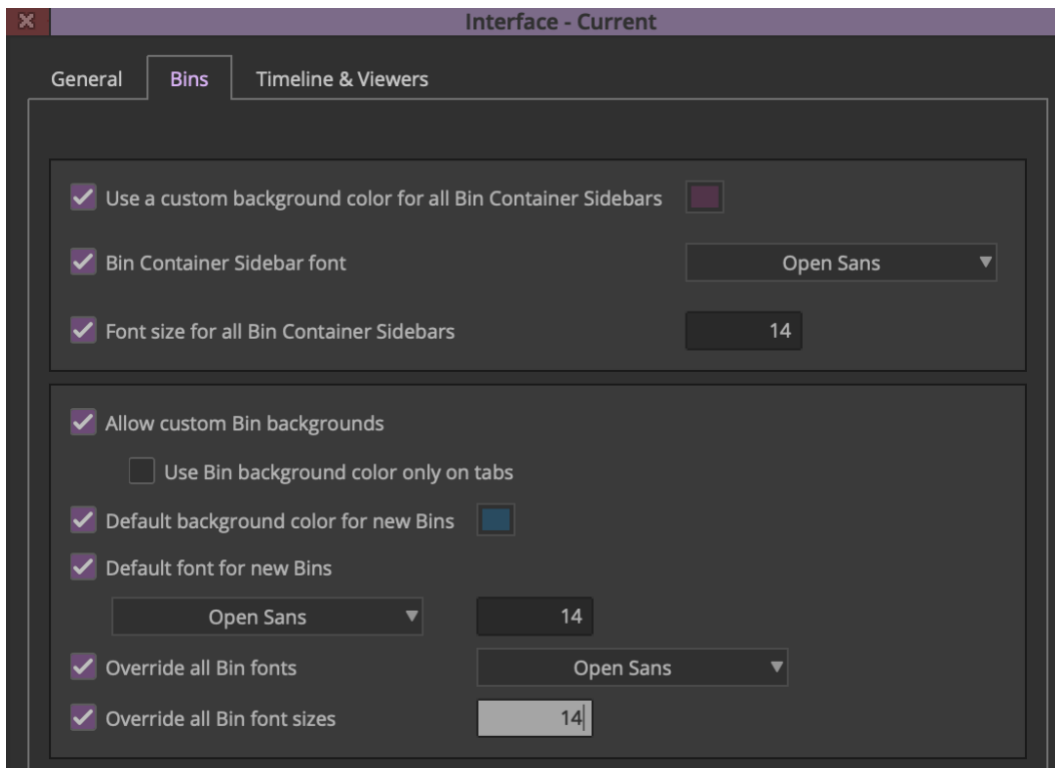


2.5 Import

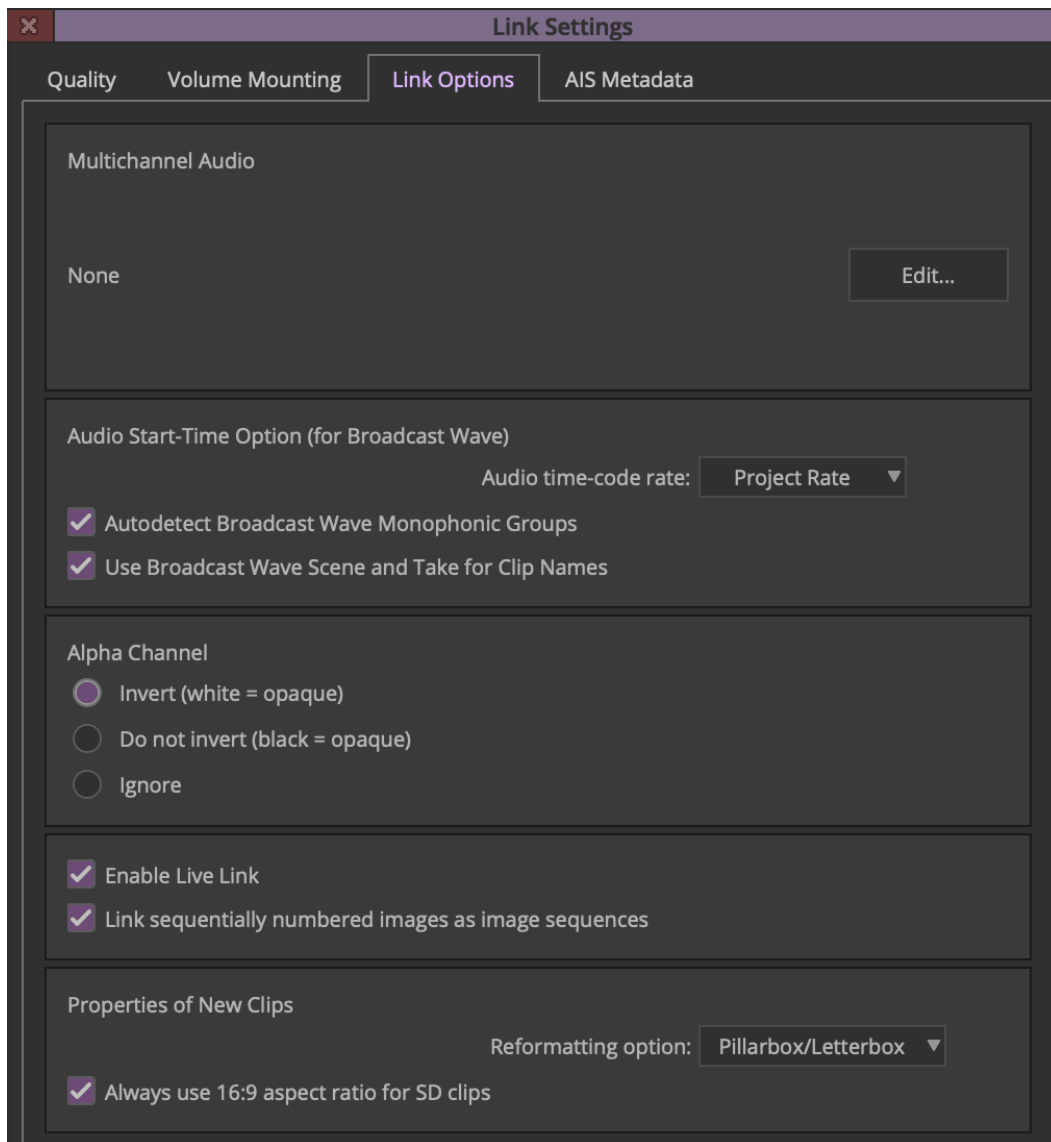
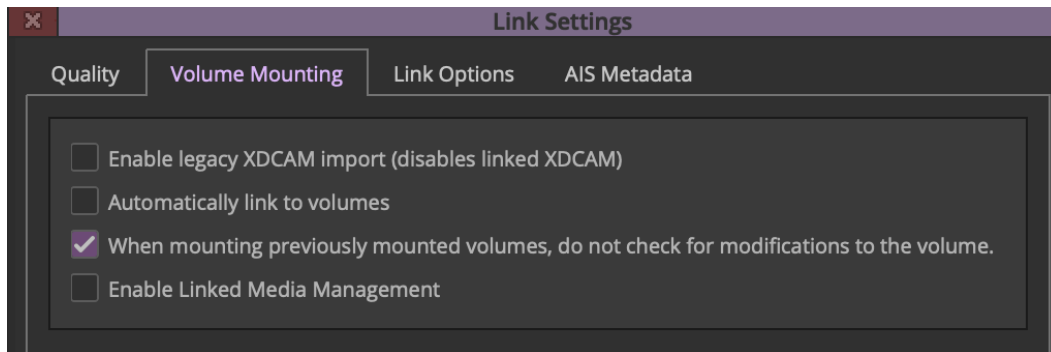


2.6 Interface

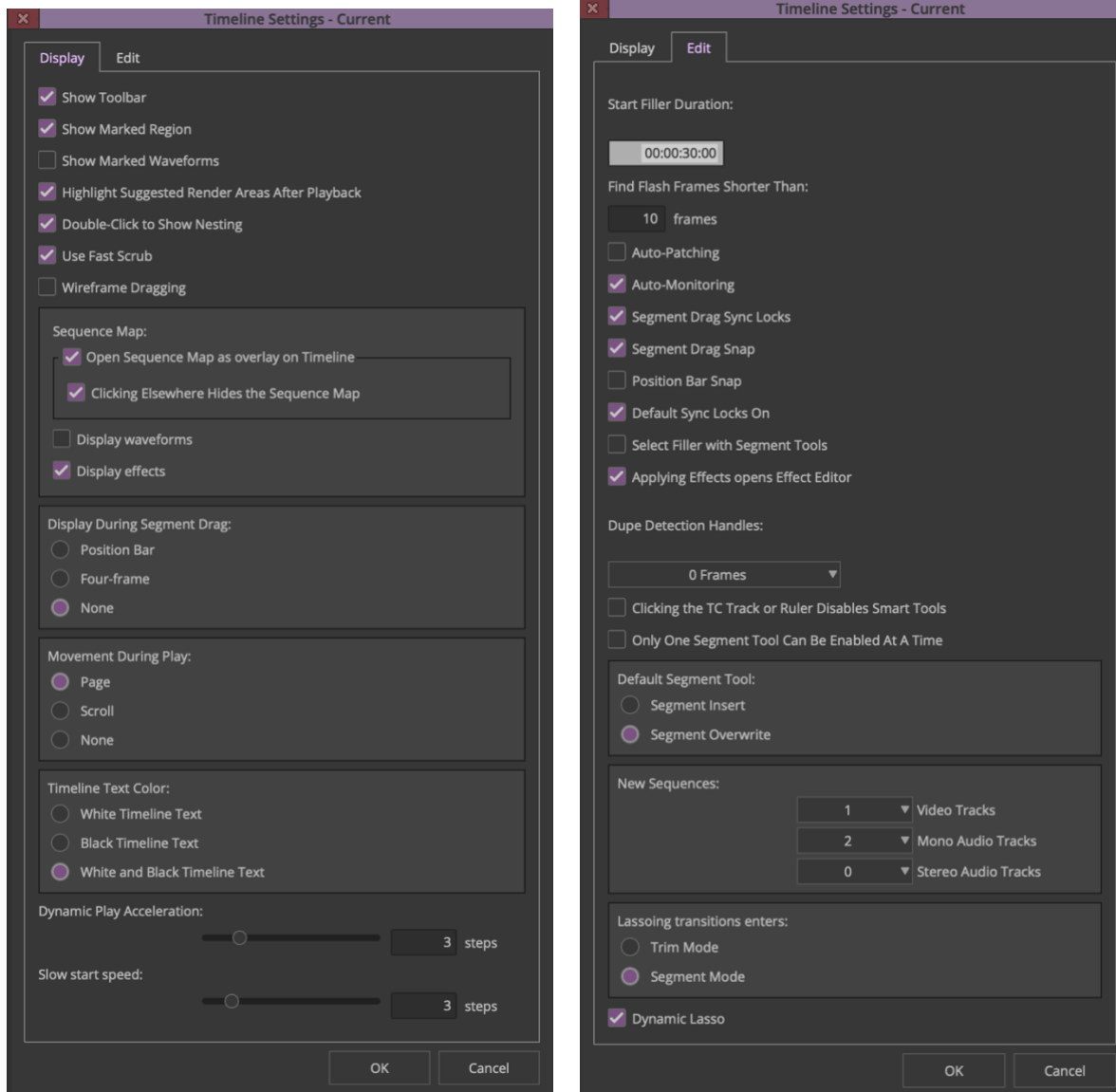




2.7 Link



2.8 Timeline



2.9 Transfer

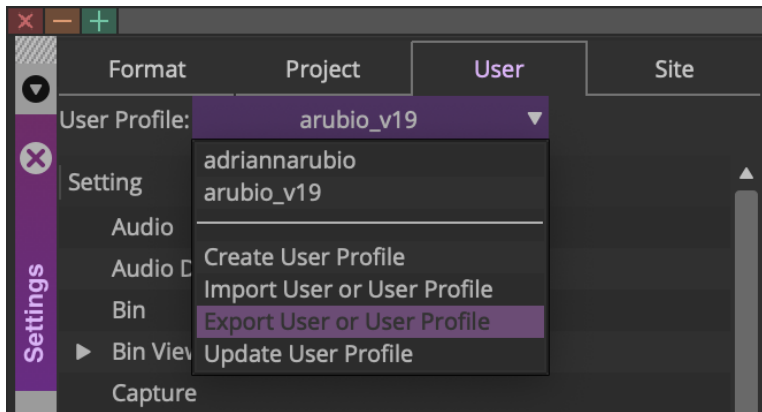
Uncheck the **Re-encode for XDCAM bitstream compliance (slower)** option

3. User Profiles

3.1 Exporting a User Profile

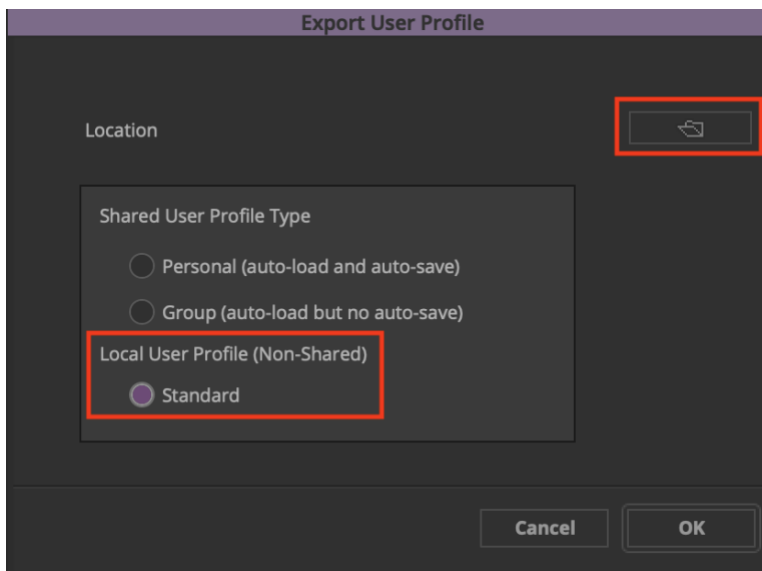
To export a User Profile, do the following:

Click **File > Settings > User tab > click the User Profile: menu > select Export User or User Profile**



The **Export User Profile** window opens. At the top right, click the folder icon and navigate to where you want to save the User Profile.

For **Local User Profile (Non-Shared)**, select **Standard** then click **OK**



3.2 Importing a User Profile

After launching Media Composer, at the **Select Project** window, click the **User Profile** menu then select **Import User or User Profile**.

Navigate to the User Profile folder then click **Open**.

